

# Township of Ray

*"The Jewel of Macomb County"*



## Parks and Recreation Plan

2021-2025

Draft

# Table of Contents

Introduction	4
Community Description	5
Administrative Structure	11
Parks & Recreation Inventory	13
Resource Inventory	20
Recreation Needs & Opportunity Analysis	24
The Planning & Public Input Process	28
Goals and Objectives	30
Action Strategies	32
Appendix	34

# 2

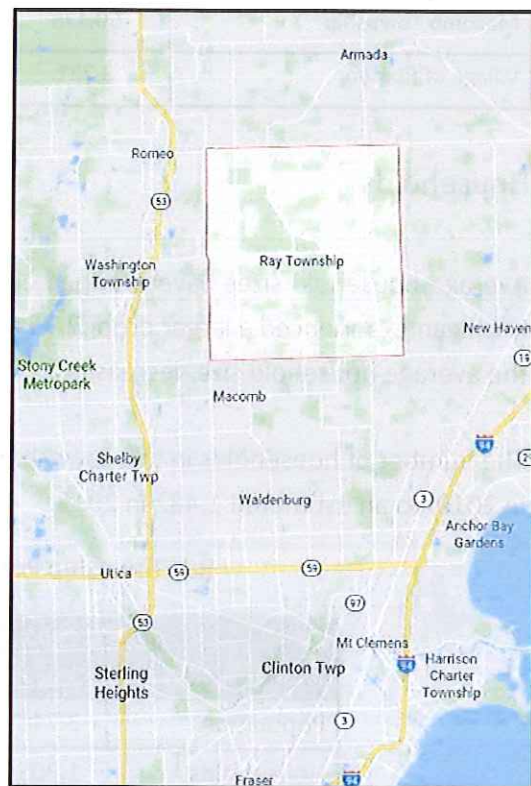
## Community Description

The following is a description of the various physical features of Ray Township. This description is important to the recreation planning process because it establishes the physical context in which future decisions regarding recreation facility and program development will take place.

### Community Profile

Ray Township is located in the north central portion of Macomb County. The Township is comprised of approximately thirty-six (36) square miles and shares a boundary with Macomb Township to the south, Washington Township to the west, Armada Township to the north, and Lenox Township to the east. In addition, the northwest corner of the Township directly abuts the Village of Romeo.

In terms of access, Ray Township does not have direct access to any of the region's major expressways. The Township does have direct access to 26 Mile Road which in turn provides access to M-53 (approximately 3 miles to the west), and I-94 (approximately 4 miles to the east). Romeo Plank Road and North Avenue provide a north/south connection to and from the Township.



## Age Characteristics

An important demographic factor influencing recreation planning is the age composition of the community and the extent to which this composition has changed over time. This can assist in matching recreational services to community characteristics, and in determining the special needs of certain age groups.

While the Township’s population has remained stable, there has been an increase in certain population segments, particularly in those aged 55-64. From 2010 to 2018, this segment of the population increased by 44.3%. SEMCOG also projects that the number of people age 65 and older in Ray Township will increase an additional 121% by year 2045.

Ray Township Population by Age Brackets

	2010	2018	2010-2018 Percentage Change
Under 5	152	168	+10.5
5-19	742	683	-7.9
20-34	471	607	+28.8
35-54	1,232	772	-37.3
55-64	584	843	+44.3
65-84	510	649	+27.3
85+	48	147	+206.2
Median Age	45.2	45.4	+0.2 Years

Source: Southeast Michigan Council of Governments

## Racial Composition

One important social characteristic of a community is its racial make-up. Understanding the racial composition of a community helps to identify the diverse needs of its population.

The following chart indicates the racial make-up of the Township in both 2010 and 2018.



As of 2018, the percentage of residents in Ray Township with a Bachelor's or Graduate College Degree was 18%. In addition, the percentage of residents with a high school degree or higher was 89.8%.

Highest Level of Education Completed – 2018  
(Percentage of Residents)

Highest level of education	Ray Township	Macomb County	Michigan
Graduate/Professional	7.3%	8.5%	12.6%
Bachelor's	10.7 %	16.0%	18.0%
Associate	7.8%	10.6%	8.5%
Some college, no degree	20.8%	24.8%	23.4%
High school graduate	30.5%	29.7%	28.7%
Did not graduate from high school	10.2%	10.3%	9.0%

Source: Southeast Michigan Council of Governments

### Housing & Building Trends

Housing is a vital characteristic of any community. Houses are highly visible and relatively permanent, and for these reasons serve as great indicators of the wellbeing of a community.

Consistent with nationwide trends, housing values in Ray Township dropped 8.9% from 2010 to 2018. However, the median housing value in Ray Township was \$272,156 in 2018, which exceeded the county median by over \$90,000.

Median Housing Value 2010 – 2018

	2010	2018	Change
Ray Township	\$272,156	\$247,900	-8.9%
Macomb County	\$187,653	\$157,700	-16.0%

Source: Southeast Michigan Council of Governments

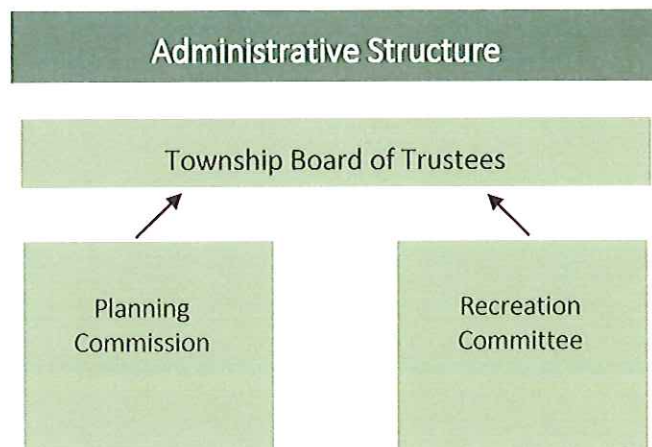
# 3

## Administrative Structure

In terms of recreation planning within the Township, the Township Planning Commission and Township Recreation Committee provides an advisory role to the Township Board of Trustees, which makes all decisions and expenditures on Parks and Recreation issues. In addition, the Township has a part-time Recreation Director who oversees recreational activities and events.

The Township currently has only one municipally-operated recreational facilities, which is located adjacent to the Township Hall, on Wolcott Rad. Ray's current recreation budget for recreation and senior citizen activities is \$51,300.

The Township is furthering the recreation planning process through development of this Recreation Plan in order to develop a recreation program which meets the current and future needs of Township residents.



# 4

## Parks & Recreation Inventory

When a community seeks to develop a comprehensive parks and recreation master plan, it is imperative to catalog existing parks and recreation facilities. An extensive inventory of parks and recreation will allow a community to highlight its assets, develop linkages, build off of innovative trends, and determine any gaps in services.

### Existing Facility Inventory

Various methods were employed to assess these recreational facilities, including a review of aerial photographs and existing maps, windshield surveys, site visits, and discussions with recreational providers. The inventory that follows provides a detailed look at the amenities available at private and regional recreational facilities/parks.

### State and Regional Parks

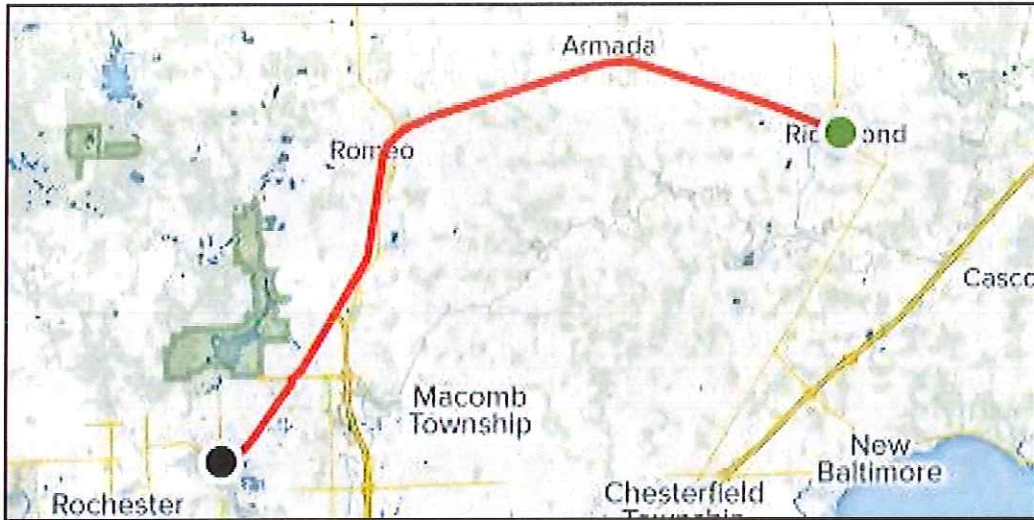
Ray Township is part of a region that has a wealth of parks and recreation destinations. As a region, southeast Michigan has illustrated a longstanding commitment to parks and recreation. From major park systems to wildlife preservation areas, the State of Michigan and the Huron-Clinton Metroparks Authority have established a network of facilities that provide users of all abilities and interests with plentiful parks and recreation destinations.

Sixteen (16) state parks and recreation areas are located in the five-county area surrounding Ray. In total, these recreation facilities encompass over 50,000 acres of land, and offer a wide range of

## Macomb County Recreational Facilities

### Macomb Orchard Trail

The Macomb Orchard Trail is a 27-mile long, nonmotorized trail, which extends from Shelby Township to the City of Richmond. It is the anchor of Macomb County's regional trail network.



### Freedom Trail

The Freedom Trail is a non-motorized trail traversing Sterling Heights, Clinton Township, Harrison Township, and ending at Lake Macomb Metropark.

### Freedom Hill County Park

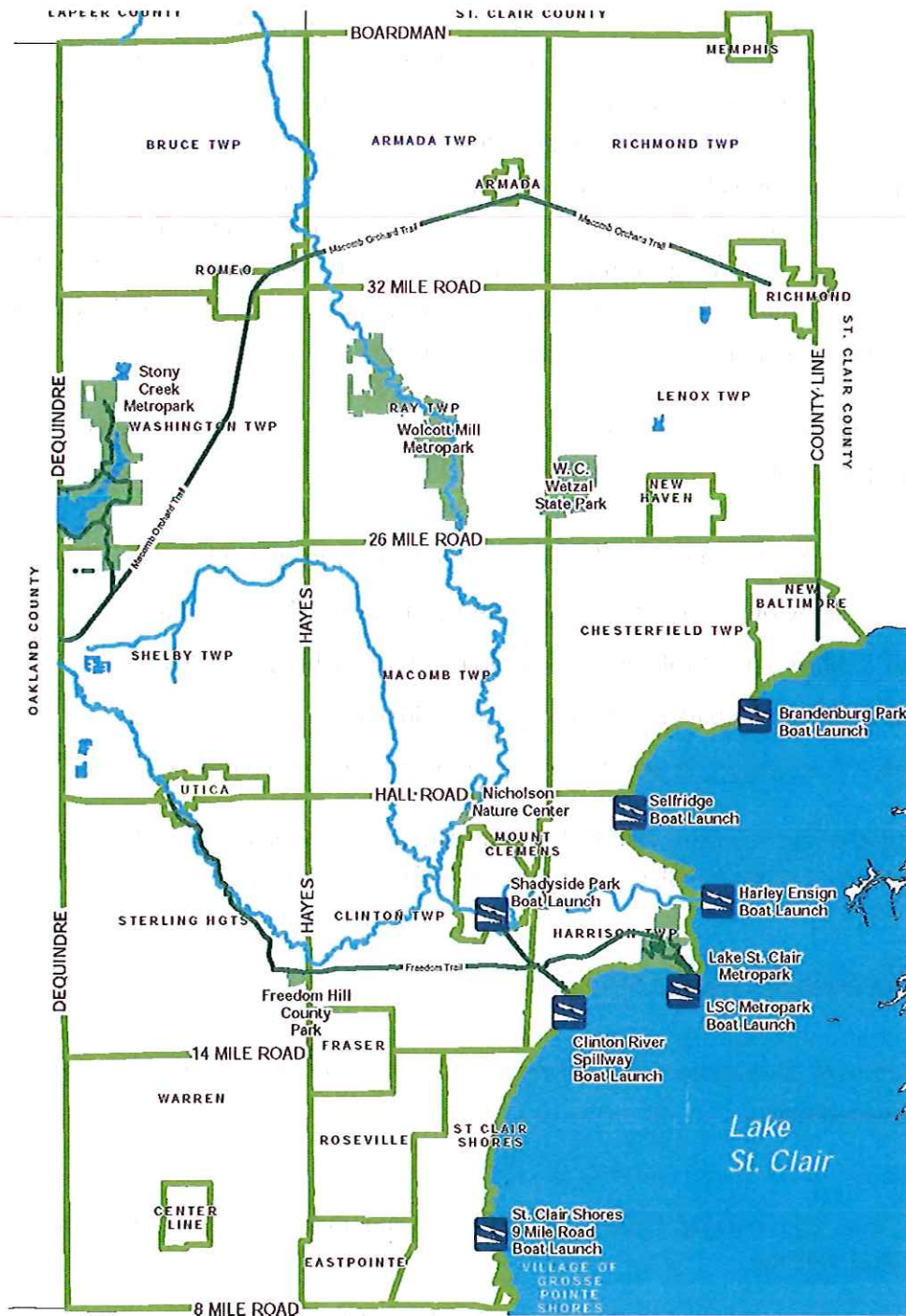
Freedom Hill County Park is a 100 acre county-owned park facility located in Sterling Heights. The facility includes festival grounds, memorials, picnic areas and pavilions, non-motorized trails, a major venue amphitheater and indoor recreation center.

### Ray Township Hall Park

The Ray Township Hall Park, located adjacent to the Township's administrative offices and library, provides a number of different play structures, baseball fields, a basketball court, several picnic pavilions, as well as the Township's Senior Citizen Activity Center. In addition, the park has a thorough sidewalk and pathway system, that includes a walking path around the exterior perimeter of the park, allowing easy access to its facilities.



# Macomb County Major Recreation Facilities and Major Trail Network



Source: Macomb County Department of Planning and Economic Development

### Play Areas

- There is an accessible route (60 inches wide) to the entrance of the play area with a slope no steeper than 1:16.
- For playground equipment, at least one turning space is provided on the same level as play components.
- Play area surface is firm and stable (mulch/woodchips, sand and gravel are not accessible surfaces)
- Where multiple swings in a swing bay are provided, one swing is located on an accessible route.
- For court sports, at least one accessible route connects both sides of the court.

### Park Amenities

- Picnic tables provide at least one wheelchair space for each 24 linear feet of usable table surface perimeter. The aisles between chairs and tables are 3 feet wide.
- Drinking fountain spout outlets are a maximum of 36 inches above the finish floor or ground.
- Safety is promoted by good street lighting.
- Ramps are non-slip.
- If public restroom facility present, there is at least one fully accessible restroom.

### Trails and Sidewalks

- There is a path of travel that does not require the use of stairs.
- Bike paths are separate from pedestrian walkways.
- Sidewalks are free of obstruction, wide enough for wheelchairs, solid (not made of dirt), and have curb cuts.
- All stairways feature a railing and stair treads that are painted to distinguish each step.
- Handrails are provided on both sides of a ramp.
- Accessible routes connect all park amenities and coincide with general circulation paths.

### Play Areas

- There is an accessible route (60 inches wide) to the entrance of the play area with a slope no steeper than 1:16.
- For playground equipment, at least one turning space is provided on the same level as play components.
- Play area surface is firm and stable (mulch/woodchips, sand and gravel are not accessible surfaces)
- Where multiple swings in a swing bay are provided, one swing is located on an accessible route.
- For court sports, at least one accessible route connects both sides of the court.

### Park Amenities

- Picnic tables provide at least one wheelchair space for each 24 linear feet of usable table surface perimeter. The aisles between chairs and tables are 3 feet wide.
- Drinking fountain spout outlets are a maximum of 36 inches above the finish floor or ground.
- Safety is promoted by good street lighting.
- Ramps are non-slip.
- If public restroom facility present, there is at least one fully accessible restroom.

### Trails and Sidewalks

- There is a path of travel that does not require the use of stairs.
- Bike paths are separate from pedestrian walkways.
- Sidewalks are free of obstruction, wide enough for wheelchairs, solid (not made of dirt), and have curb cuts.
- All stairways feature a railing and stair treads that are painted to distinguish each step.
- Handrails are provided on both sides of a ramp.
- Accessible routes connect all park amenities and coincide with general circulation paths.