

5

Resource Inventory

In a community such as Ray Township, where recreational opportunities are heavily intertwined with the natural environment, an inventory of natural resources is helpful in understanding where potential opportunities may be available.



Historic Wolcott Mill

The following maps depict Natural Features, Sub-Watersheds/Elevations, and Soil types within the Township.

Play Areas

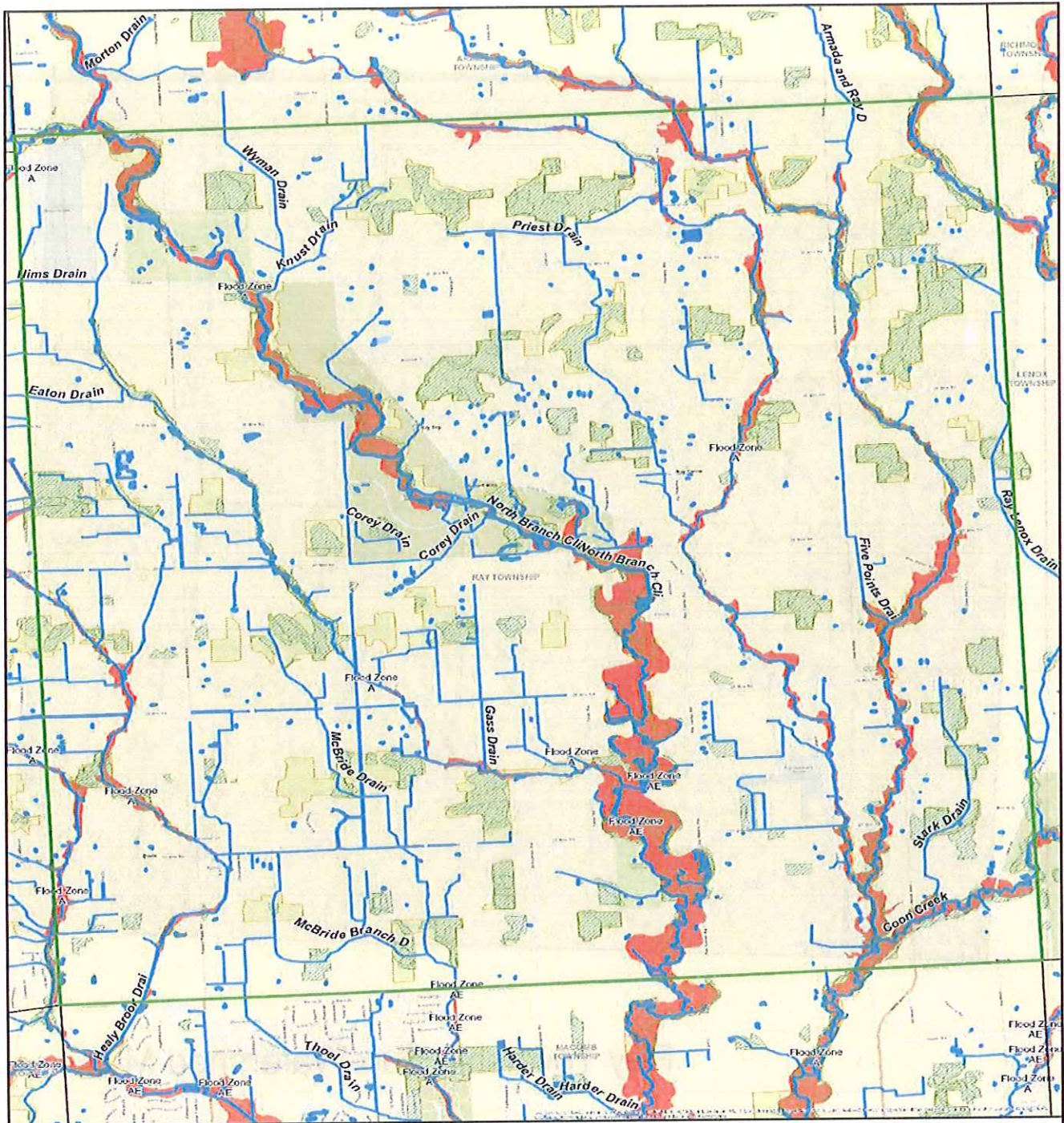
- There is an accessible route (60 inches wide) to the entrance of the play area with a slope no steeper than 1:16.
- For playground equipment, at least one turning space is provided on the same level as play components.
- Play area surface is firm and stable (mulch/woodchips, sand and gravel are not accessible surfaces)
- Where multiple swings in a swing bay are provided, one swing is located on an accessible route.
- For court sports, at least one accessible route connects both sides of the court.

Park Amenities









- Picnic tables provide at least one wheelchair space for each 24 linear feet of usable table surface perimeter. The aisles between chairs and tables are 3 feet wide.
- Drinking fountain spout outlets are a maximum of 36 inches above the finish floor or ground.
- Safety is promoted by good street lighting.
- Ramps are non-slip.
- If public restroom facility present, there is at least one fully accessible restroom.


Trails and Sidewalks

- There is a path of travel that does not require the use of stairs.
- Bike paths are separate from pedestrian walkways.
- Sidewalks are free of obstruction, wide enough for wheelchairs, solid (not made of dirt), and have curb cuts.
- All stairways feature a railing and stair treads that are painted to distinguish each step.
- Handrails are provided on both sides of a ramp.
- Accessible routes connect all park amenities and coincide with general circulation paths.



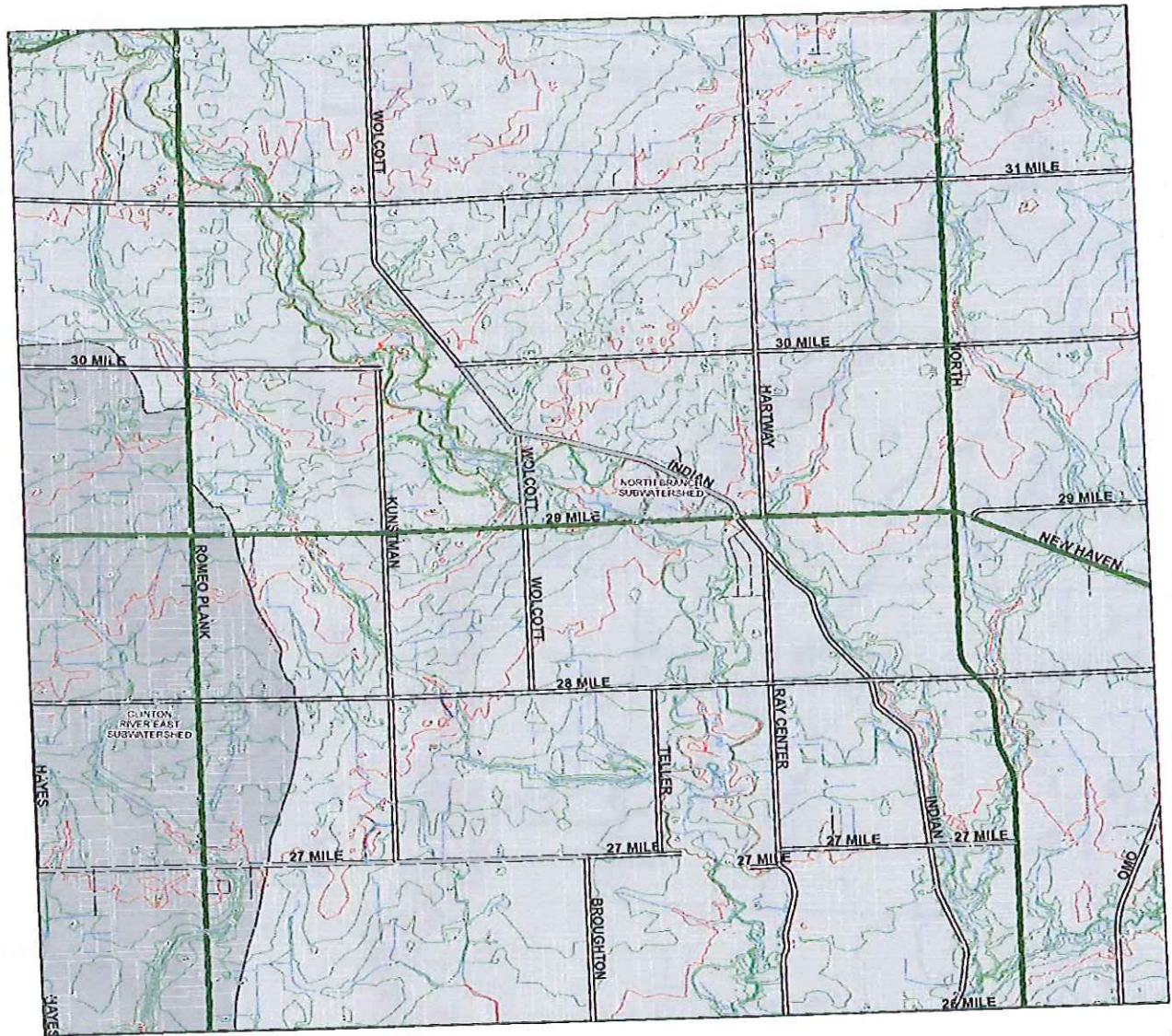
Ray Township Natural Features Map

	Override		A; AE
	Community Borders		Rivers Streams and Drains
	Potential Wetlands		Lakes Ponds and Basins
	Natural Areas		Clinton River



Cassin Planning Group, LLC

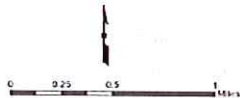
Source: Macomber County Department of Planning & Economic Development



Ray Township Sub-Watershed Map

Legend

- CLINTON RIVER EAST SUBWATERSHED
- NORTH BRANCH SUBWATERSHED
- Parcels



© 2014 Catch Thinking Group, LLC